

A DOLL'S HOUSE



Compare
and
Contrast

two
versions of
Act I: A
*Doll's
House*

He is the master.
He's called a husband.
She is the plaything.
She's called a wife.



Paramount Pictures and Elkins Productions Ltd. present

Claire Bloom

in her award winning performance in

"A Doll's House"

Screenplay by Christopher Hampton · Produced by Hillard Elkins · Directed by Patrick Garland

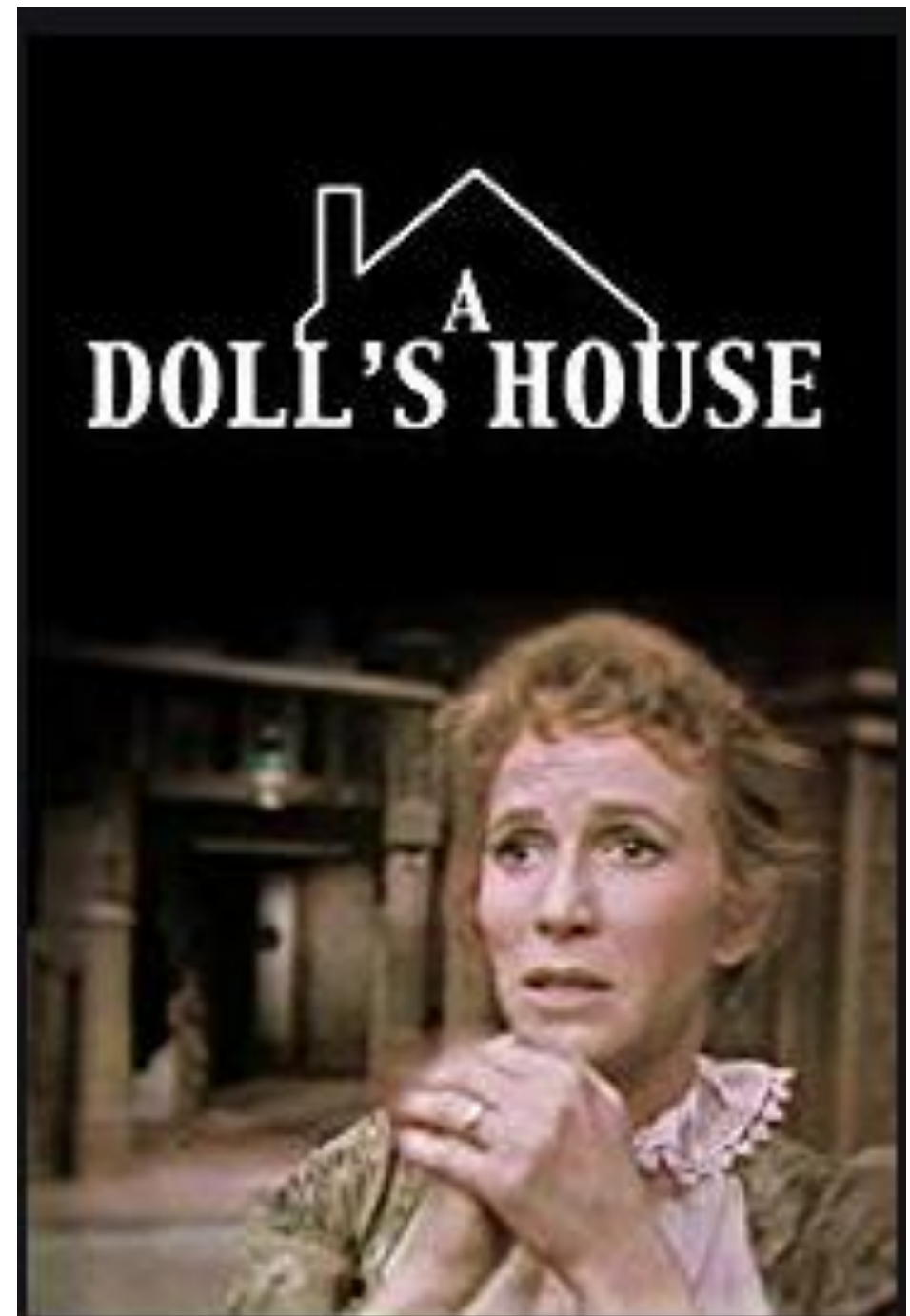


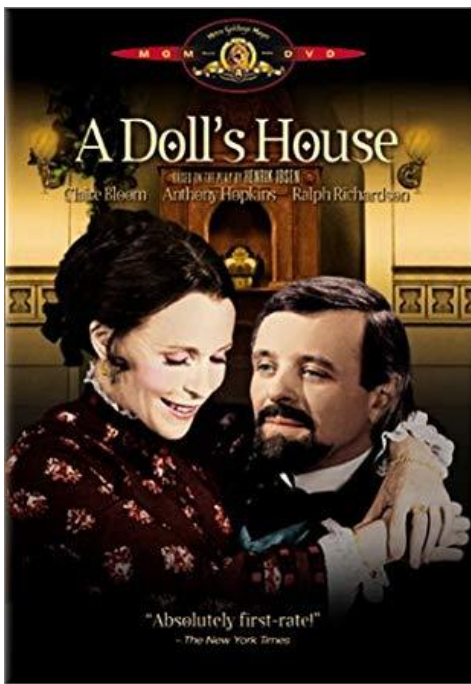
Panavision · In Color · Prints by Movielab · A Paramount Release



1959 Live Telecast

Directed by	George Schaefer
Produced by	George Schaefer
Written by	Henrik Ibsen James Costigan
Starring	Julie Harris Christopher Plummer
Distributed by	National Broadcasting Company
Running time	90 minutes





1973 Film

- **Actors:** [Claire Bloom](#), [Anthony Hopkins](#), [Ralph Richardson](#), [Denholm Elliott](#), [Anna Massey](#)
- **Directors:** [Patrick Garland](#)
- **Writers:** [Christopher Hampton](#), [Henrik Ibsen](#)
- **Producers:** [Hillard Elkins](#), [Paul Kael](#)



Live TV Stage and Film: Two-Column Analysis and Thesis-Statement Evaluation

- Objective: Analyze and evaluate two filmed versions of the source material: Ibsen's *A Doll's House*
- **Create a two-column chart on your own paper.**
- For each Act I clip (both are 29 minutes long):
 - Create a two-column chart with analysis of specific scenes and actions used in each filmed text, using theatrical terminology we reviewed yesterday in class
 - Write an evaluative thesis about each film and your perception of its quality based on the effects of the director's choices.